



A
world
strong
with
children.

WE STAND TOGETHER
NEW ZEALAND'S MOS
CHILDREN. WE HELP C
THEIR FAMILIES TO ST
WE STAND AGAINST IS
WE TAKE A STAND, AC
TO DELIVER SOLUTION
CHILD'S WORLD A SAF
HEALTHIER PLACE.



TO BRING HOPE TO
THE MOST VULNERABLE
CHILDREN &
STAND UP & BE STRONG.
COURAGE & FEAR.
ACTING WITH URGENCY
IN SITUATIONS THAT MAKE A
DIFFERENCE, HAPPIER &



We
nurture
the
dreams
&
aspirations
of
our
nation's
children,
allowing
them
to
find
their

tūrangā



waewae

Their

place

to

stand.



OUR MISSION

To transform the lives of children and young people who are at significant risk of harm to their wellbeing as a consequence of the environment in which they are being raised and their own complex needs.

For each child, we seek to develop their capacity to live in healthy, hopeful relationships with others.

On this depends all of the other necessary outcomes that contribute to their ability to enjoy life and reach their potential.

esla

OUR APPROACH

The daily focus of our work is to protect children from further trauma, support their recovery and enhance their wellbeing. Three principles underpin our approach:

OUR VALUES

Our success working with our most vulnerable children is based on our deep commitment to being child centred, family respectful, trauma aware, solution focused and culturally competent in all that we do.

md

1/ Harm caused by relationships is best healed by relationships.

2/ A child's home and family, school and teachers, neighbourhood and friends all play a critical role in a child's world, and each system requires attention to improve a child's quality of life.

3/ Transformative environments that provide therapeutic relationships and experiences of belonging, mastery, independence and generosity are quicker and more effective for a child's journey of recovery.

These principles are fully supported by recent brain science discoveries and the evidence base of multisystemic therapy and the therapeutic community movement.

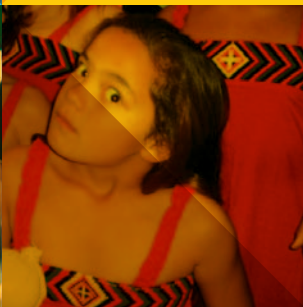


OUR HISTORY Stand is a charity that provides specialist social services including therapeutic care and education to children aged 5 to 12. The organisation, originally known as Children's Health Camps, was founded over 90 years ago from a need that had been recognised much earlier. The poor health standard of those recruited for the Boer War highlighted the need for improved child health. Sunshine Camps, as they were first called, aimed to give children the benefits of plenty of sunshine, rest, fresh air and regular healthy meals.





Stand has come a long way since then. In 2000, the organisation recognised that the children being referred for health concerns were bringing with them stories and histories of significant family difficulties, sometimes resulting in neglect, abuse and other trauma. These needs required a more holistic and therapeutic approach if the children were to heal and recover. So began a journey that has continued to evolve over the last decade in response to the needs of some of our most vulnerable and troubled children and their families.



OUR SERVICES include home & school-based social work services, a nationwide therapeutic care & education service for children & families, child & family mentoring, & respite services for caregivers, including grandparents & foster parents.

Our community & school social workers have many years of experience providing individualised support to children & families who have complex needs & family structures.

In all of our services, Stand serves the child & family as a supportive partner in the process of:

- assessing needs & strengths
- regaining hope & motivation
- developing insight & aspirations
- making plans
- achieving dreams.

OUR PROGRAMMES Programmes provided by Stand Children's Services include family development programmes such as Te Puawai, Keeping the Magic Going, Stepping Out, Family Friends & Family Return on Investment (Family ROI).

Programmes for children & young people include our Children's Villages, KidzaCool Adventures, Seasons for Growth, Storm Birds, Journey of Hope, Kids with Incredible Potential (KIP), Healthy Heroes & a variety of other programmes that address the individual health, education & social needs of children.

We know that many of the children referred to us will not successfully recover without a planned & consistent therapeutic environment. They need to experience profound healing relationships & see that everyone is working together to get to the bottom of their difficulties in the context of everyday life, school & community. Our Children's Villages provide this transformative experience.



OUR PARTNERS & COLLEAGUES Stand recognises that a child's home and family, school and teachers, neighbourhood and friends all play a critical role in a child's world. We know that each system requires attention to improve the child's quality of life and that we cannot do this on our own. Today, we provide an effective wraparound service by brokering and coordinating services with many agencies and providers across New Zealand, including:



We have a highly valued and successful partnership with our Kāhui Kaumātua who are gifted to us by iwi throughout Aotearoa to provide us with invaluable guidance and understanding of te ao Māori.



WE
STAND
TOGETHER
TO
BRING

H O P E

TO
NEW
ZEALAND'S
MOST
VULNERABLE
CHILDREN



WHEN WE PROVIDE

*an opportunity for belonging, a child learns, "I can trust."
When we provide an opportunity for mastery, a child learns, "I have talent."
When we provide an opportunity for independence, a child learns, "I have power."
When we provide an opportunity for generosity, a child learns, "My life has purpose."*

**A
world
strong
with
children.**



Stand Children's Services
Tū Māia Whānau

- Northern** P/09 437 9050
E/northern@standforchildren.org.nz
Northland, Whangarei, Rodney,
North Auckland
- Auckland** P/09 534 4017
E/auckland@standforchildren.org.nz
Greater Auckland, Northern Waikato
- Midland** P/07 345 9097
E/midland@standforchildren.org.nz
Waikato, Bay of Plenty, Rotorua, Lakes,
Thames, Coromandel, Hamilton,
North Taranaki, Taumaranui
- East Coast** P/06 867 5614
E/eastcoast@standforchildren.org.nz
East Coast, Opotiki, Gisborne,
Hawke's Bay, Waipukurau
- Central** P/06 364 8069
E/central@standforchildren.org.nz
Taranaki, Whanganui, Manawatu,
Horowhenua, Kapiti, Wairarapa,
Wellington, Nelson, Blenheim
- Christchurch** P/03 332 2541
E/christchurch@standforchildren.org.nz
North, Central and South Canterbury,
Blenheim, Nelson, West Coast
- Southern** P/03 446 8119
E/southern@standforchildren.org.nz
Dunedin, Invercargill, Otago,
Southland, Queenstown, Wanaka
- National Office** P/04 472 0101
E/nationaloffice@standforchildren.org.nz
PO Box 12-547
Wellington
standforchildren.org.nz

